

Ewa W

altezza: **172**

seno: **87**

vita: **61**

fianchi: **87**

scarpe: **37**

occhi: **blu**

capelli: **castano**

height: **5,7 1/2**

bust: **34 1/2**

waist: **24**

hips: **34 1/2**

shoes: **4**

eyes: **blue**

hair: **brown**



BOOK





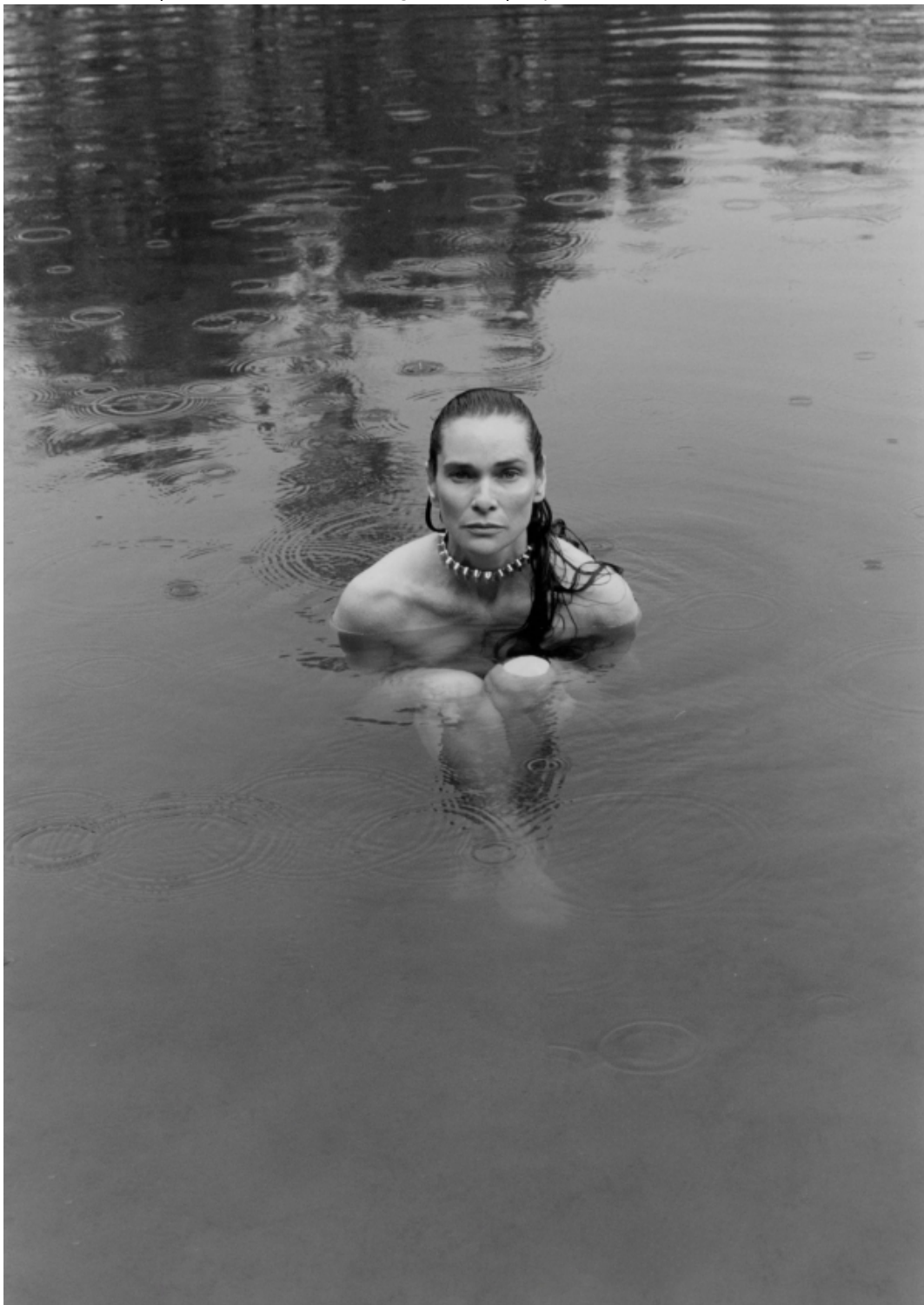












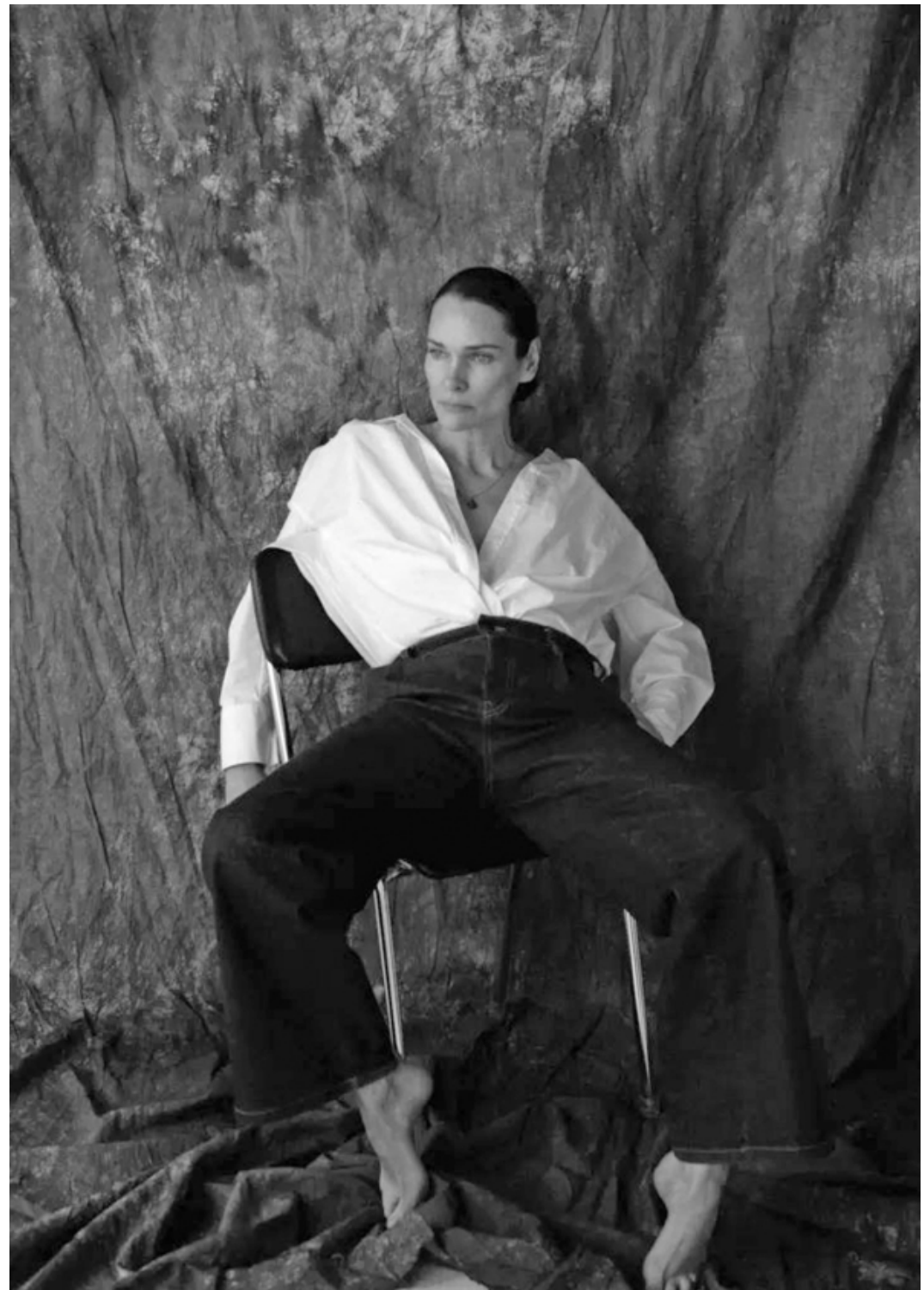




Na oho stromada
Ewa - Suklenka
MOTHER OF PEARL,
Duty NAK LONDON/
MAISON DE MODE.

















BANANA REPUBLIC

For store location information call 1-888-BR STYLE



DÉVORÉ-HEMMED VELVET
DRESS IS SET OFF BY A
CRISP COTTON VEST AND
NAVY-BLUE FISHERMAN'S CAP

Navy-blue velvet dress with
pale-blue dévoré trim, opposite,
£270, to order, at Marc O'Neil
and Brown Thomas, Dublin.

White cotton camisole, £26,
at Agnès B. Fisherman's hat, by
Kangol, £25, at Selfridges

THE ROAD AHEAD: A SOFT
CASHMERE ROLLNECK
SWEATER SITS ATOP A
LACE-TRIM CHECKED SKIRT

Navy-blue cashmere-mix sweater,
this page, by Cerruti Arté, £335,
from a selection, at Cerruti 1881.

Flared skirt, Vogue Pattern by Marc
Jacobs, no. 1943, £9.50, at major
stores. Navy-blue checked on-
viscose crepe, £8 a metre. Red
cotton braid, from £1.35 a metre.

Both at John Lewis. Ivory vintage
slip (wool/undomesth), £38,
at Steinberg & Tolkien. Leather
boots by Miu Miu, £195, at Tokio

JÜRGEN TELLER





SCAN ME 