

Mawena

altezza: **175**

seno: **85**

vita: **62**

fianchi: **90**

scarpe: **37.5**

occhi: **marroni**

capelli: **neri**

height: **5,9**

bust: **33 1/2**

waist: **24 1/2**

hips: **35 1/2**

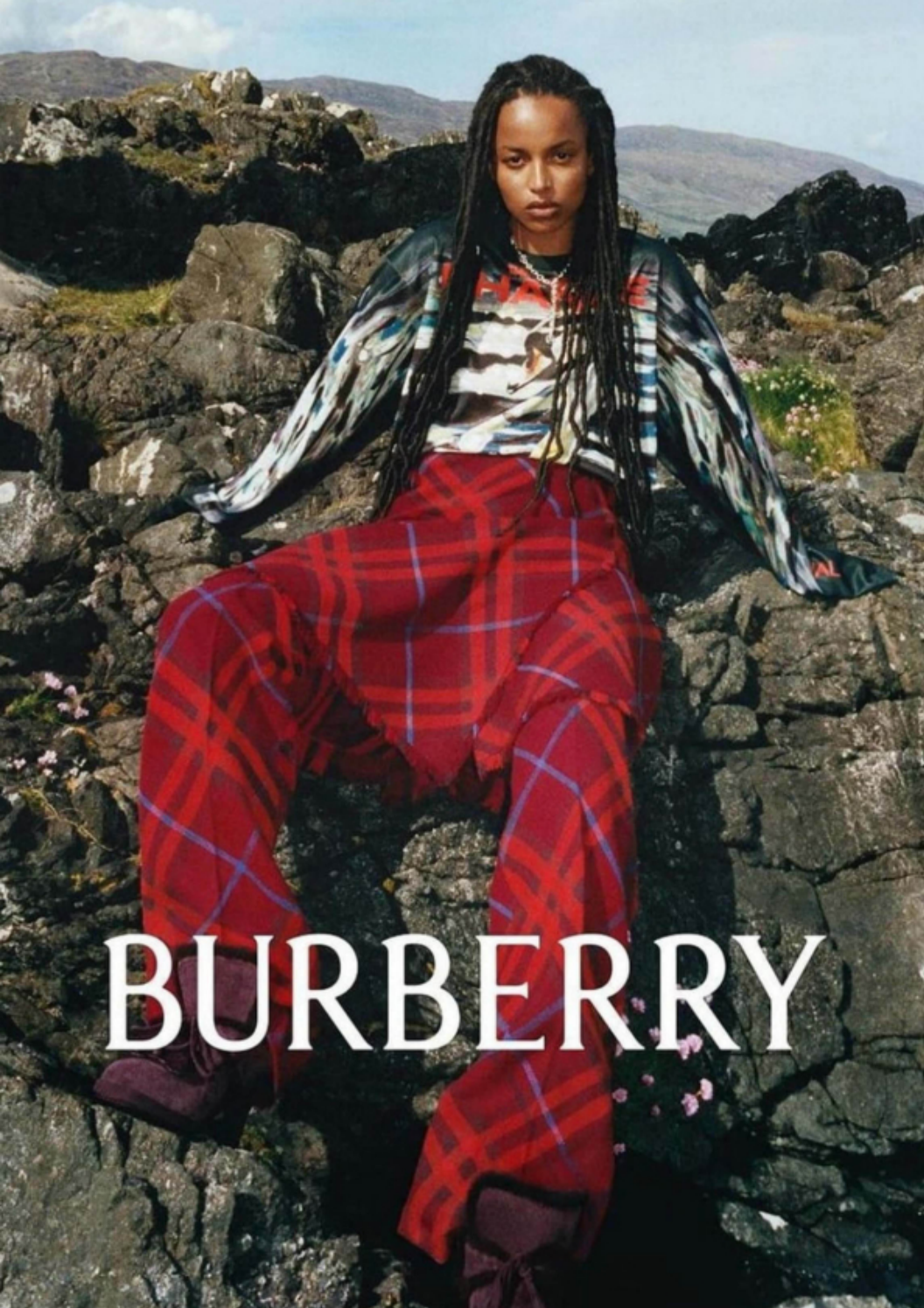
shoes: **4.5**

eyes: **brown**

hair: **black**



BOOK





MODE



GUCCI Manteau en toile de coton enduite avec motif double G.



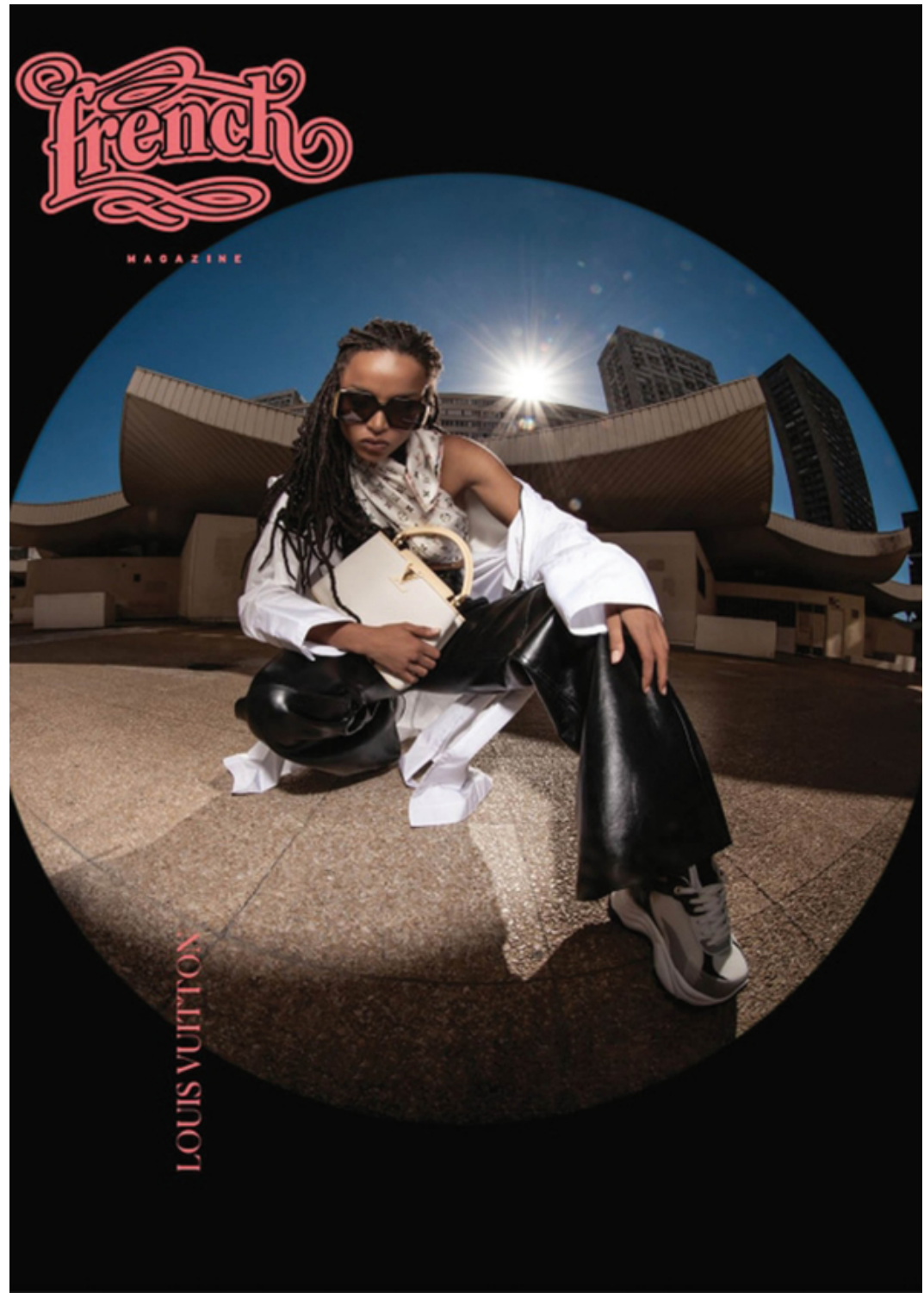
Veste blazer longue **ROLAND MOURET**,
maillot **PAIN DE SUCRE**,
boucles d'oreilles **HELENE ZUBELDIA**,
sandales **LITTLE BURGUNDY**.



Robe coton **BENOA**,
créoles **MAWE ATTAHER**,
tour de chapeau orné de plumes
HARPO VINTAGE











YVES SAINT LAURENT

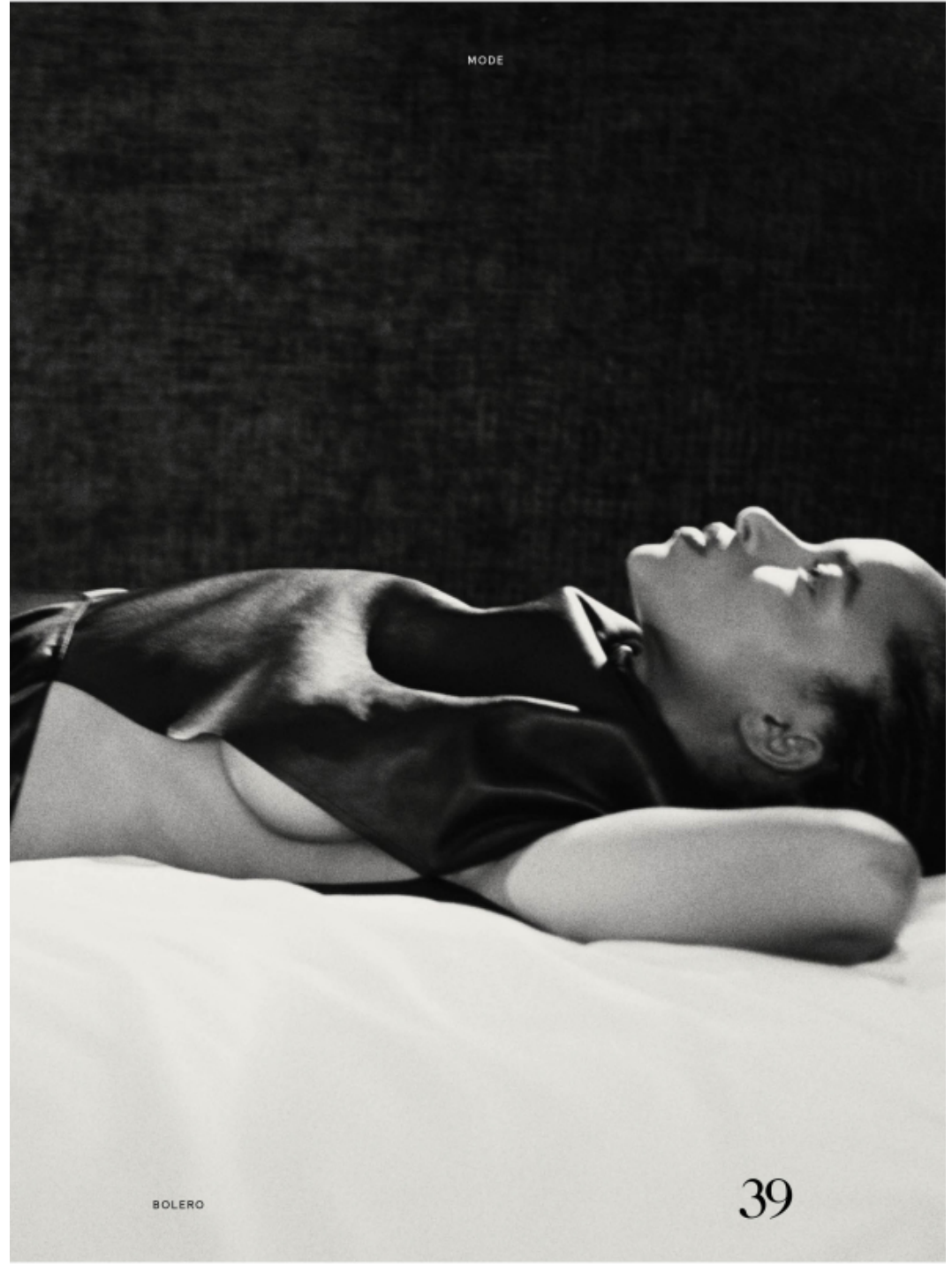
BEFORE

AFTER

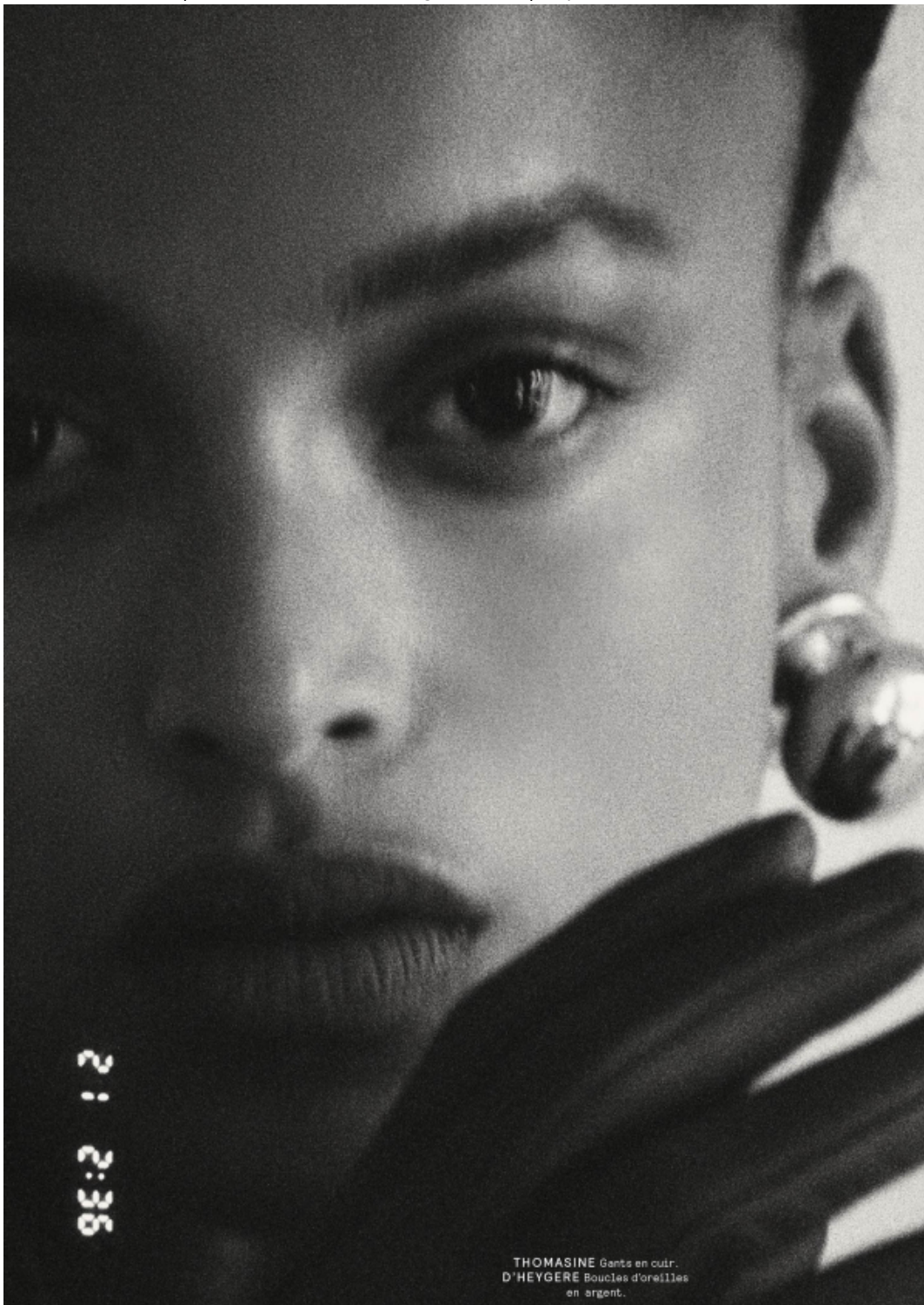
B65

TOUCHE ÉCLAT LE TEINT

A before-and-after comparison of a person's skin. The left side is labeled "BEFORE" and the right side is labeled "AFTER". The person's skin appears significantly more radiant and glowing after applying the product. A small image of the product bottle is shown on the right side. The bottle is gold and black with the YSL logo and the text "TOUCHE ÉCLAT LE TEINT" and "B65".













SCAN ME 