



D.B.

ALTEZZA: **1,86**
PETTO: **100**
VITA: **70**
SCARPE: **10,5**
OCCHI: **BLU**
CAPELLI: **BIONDI**

HEIGHT: **6'1 1/2**
CHEST: **36 1/2**
WAIST: **29 1/2**
SHOES: **10.5**
EYES: **BLUE**
HAIR: **BLONDE**

[f](https://www.facebook.com/fashionmodel.it) @fashionmodel.it
[i](https://www.instagram.com/fashionmodel.it) @fashionmodel.it
[t](https://www.twitter.com/fashionmodel.it) @fashionmodel.it
[p](https://www.pinterest.com/fashionmodel.it) @fashionmodel.it

.FASHION
FASHION MODEL MANAGEMENT
SRL
VIA S. SEBASTIANO 20
00187 ROMA (RM)
WWW.FASHIONMODEL.IT
WWW.FASHIONMODEL.IT

Svend T.

altezza: **186**

petto: **92**

vita: **75**

fianchi: **92**

scarpe: **44.5**

occhi: **blu**

capelli: **biondo**

height: **6,1 1/2**

chest: **36 1/2**

waist: **29 1/2**

hips: **36 1/2**

shoes: **10.5**

eyes: **blue**

hair: **blond**



BOOK

FORCE ONE®

THE LUXURY EXPERIENCE



© 2015/2016 - Photo: Stefano Ferrara

31

I DREAM OF ARGENTAIA ■ HELMUT NEWTON ■ HOFA ■ DOLCE&GABBANA JEWELS&WATCHES
VERSACE ■ HIGH JEWELLERY ■ FOGLIZZO ■ NEW BENTAYAGA HYBRID ■ WINTER DESTINATIONS

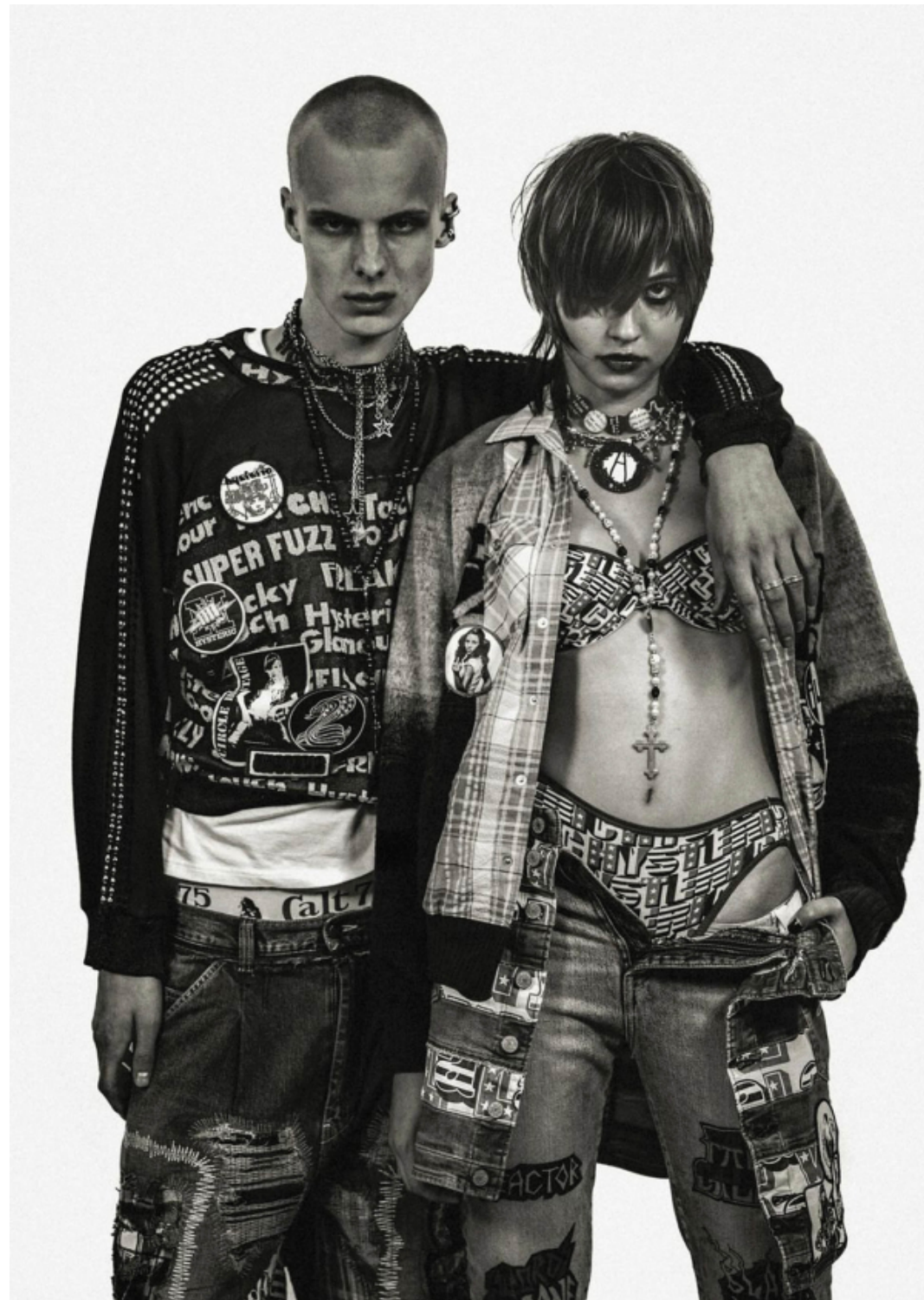


Left: Massi Daresi jacket, blouse, belt, gloves and derby
right: Faux fur, availability, trousers and flasks, blouse
DOLCE&GABBANA

Robert Lauder hat, BORGALINO









DRIFTER MAC COAT





AFTER PRAY











SCAN ME 