



ALTEZZA	187
PIETTO	46
RETTO	85
VITA	72
FIANCHI	83
PANT. INT.	88
SCARPE	43
OCCHI	VERDI
CAPELLI	CASTANO SCURO
HAIR	DARK BROWN

HEIGHT	6'1 1/2
PISTO	46
CHEST	36 1/2
WAIST	28 1/2
HIPS	33
ROSEAM	31 1/2
SHOES	9
EYES	GREEN
HAIR	DARK BROWN

.FASHION
FASHION MODEL MANAGEMENT
VIA G. SILVA 40 20149 MILANO T. +39 (02) 480961
WWW.FASHIONMODEL.IT
WWW.FASHIONINFLUENCERS.IT
@fashionmodel.it @fashionmodel.it

Leo Mel

altezza: **187**

petto: **93**

vita: **72**

fianchi: **93**

scarpe: **43**

occhi: **verde**

capelli: **castano chiaro**

height: **6,1 1/2**

chest: **36 1/2**

waist: **28 1/2**

hips: **36 1/2**

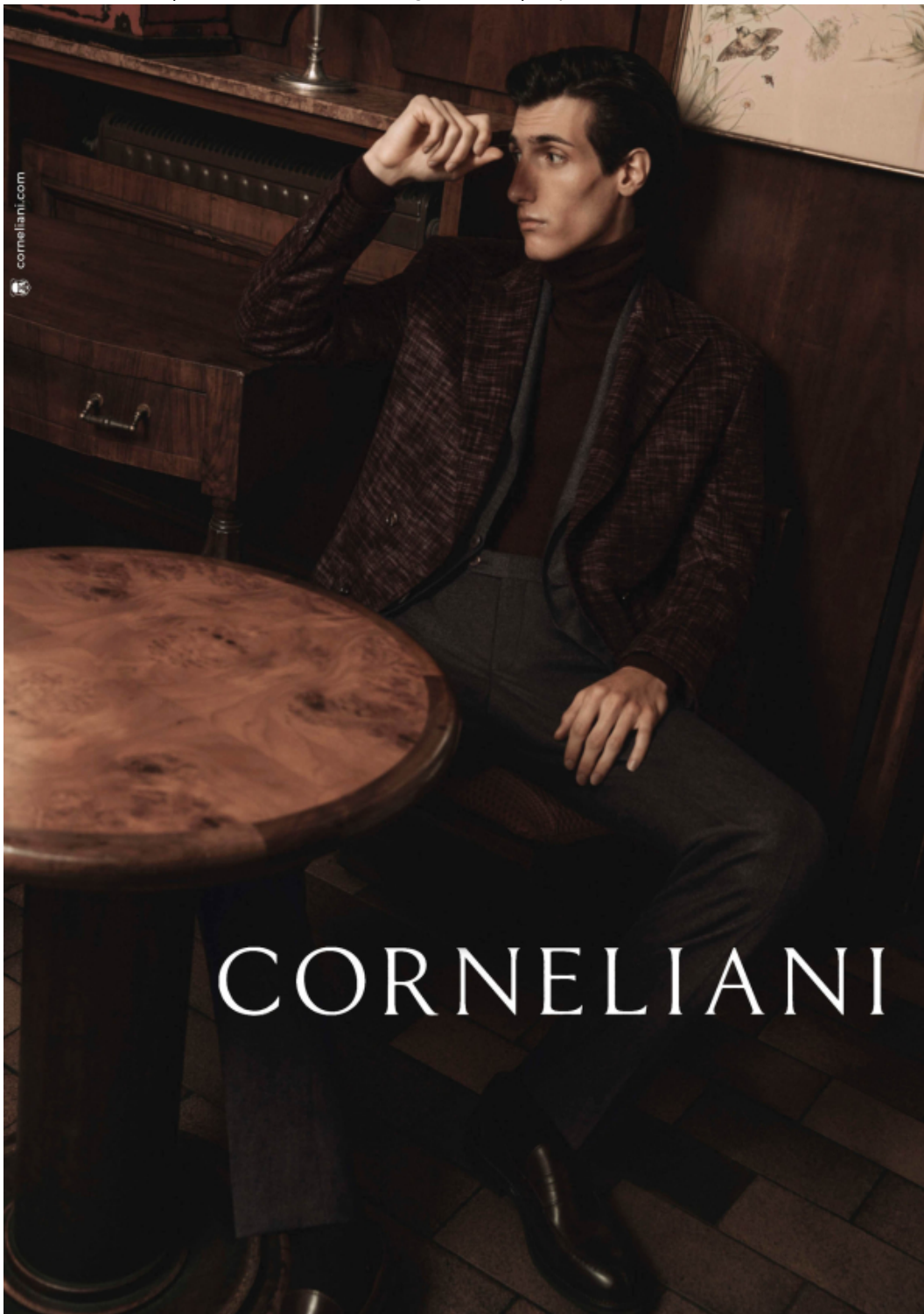
shoes: **9**

eyes: **green**

hair: **light brown**



BOOK

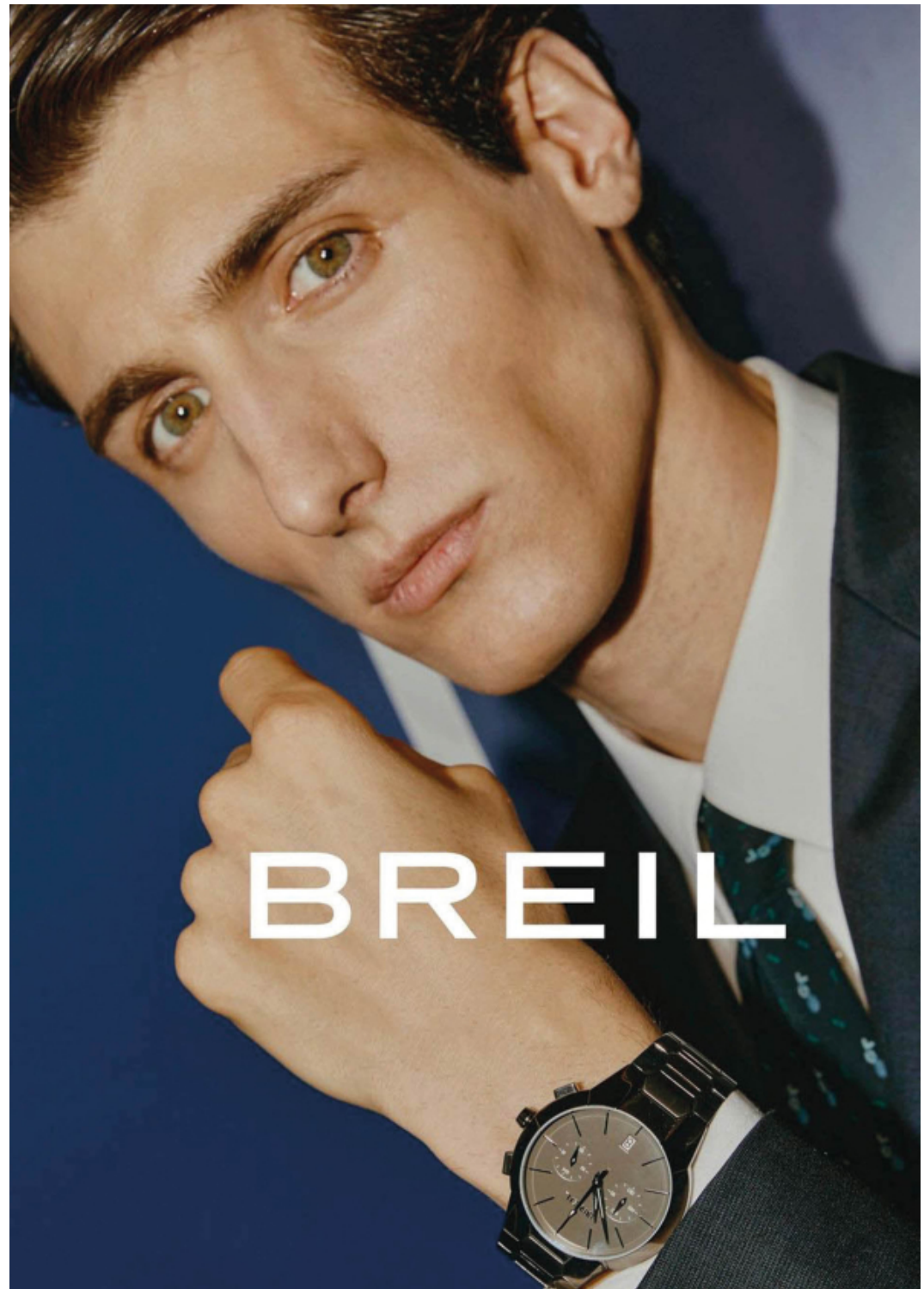


STYLE
MAGAZINE



STYLE
MAGAZINE





Piumino in nylon,
Stone Island;
T-shirt e pantaloni
in neoprene, **Marni**;
sneakers,
Onitsuka Tiger.

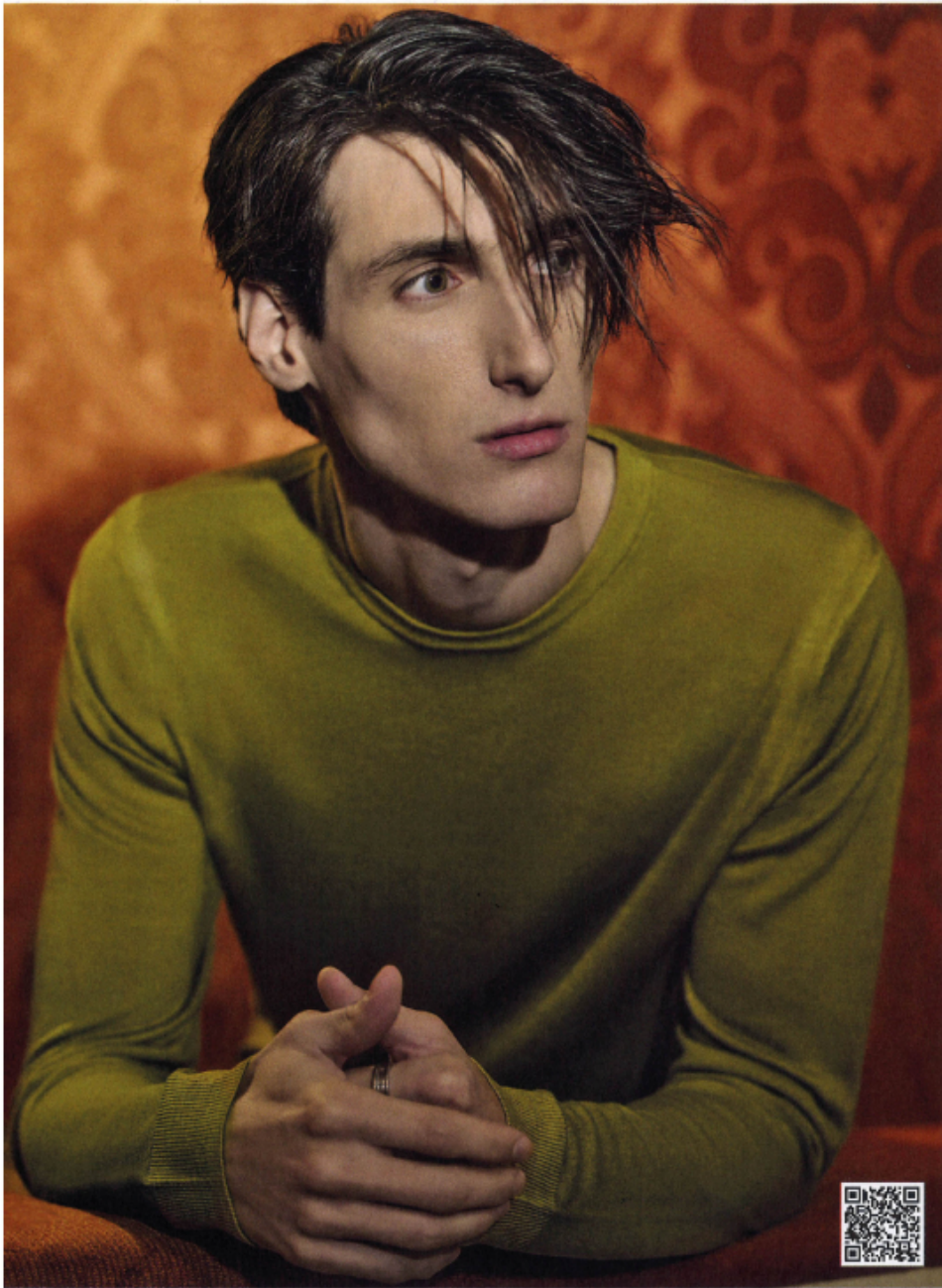
Nella pagina
a fianco: piumino
in nylon, **Pyrenex**;
gilet, **Fred Perry**
X Raf Simons;
pantaloni, **Kolor**;
sneakers,
Onitsuka Tiger.
Piumino in nylon
lucido, **Paul&Shark**;
maglia, **COS**;
pantaloni
in grisaglia di lana
mélange, **Gucci**;
sneakers,
Onitsuka Tiger.



Piumino
in pelle, **K-Way**
KL collection;
maglia e pantaloni
in panno di lana,
Kolor; T-shirt,
Perofil; sneakers,
Onitsuka Tiger.

Nella pagina
a fianco: piumino
in nylon con
cappuccio, **Ten-C**;
T-shirt, **Fred Perry**
X Raf Simons;
pantaloni con ricami
effetto dévoré, **Ann**
Demeulemeester.





LORENZONI

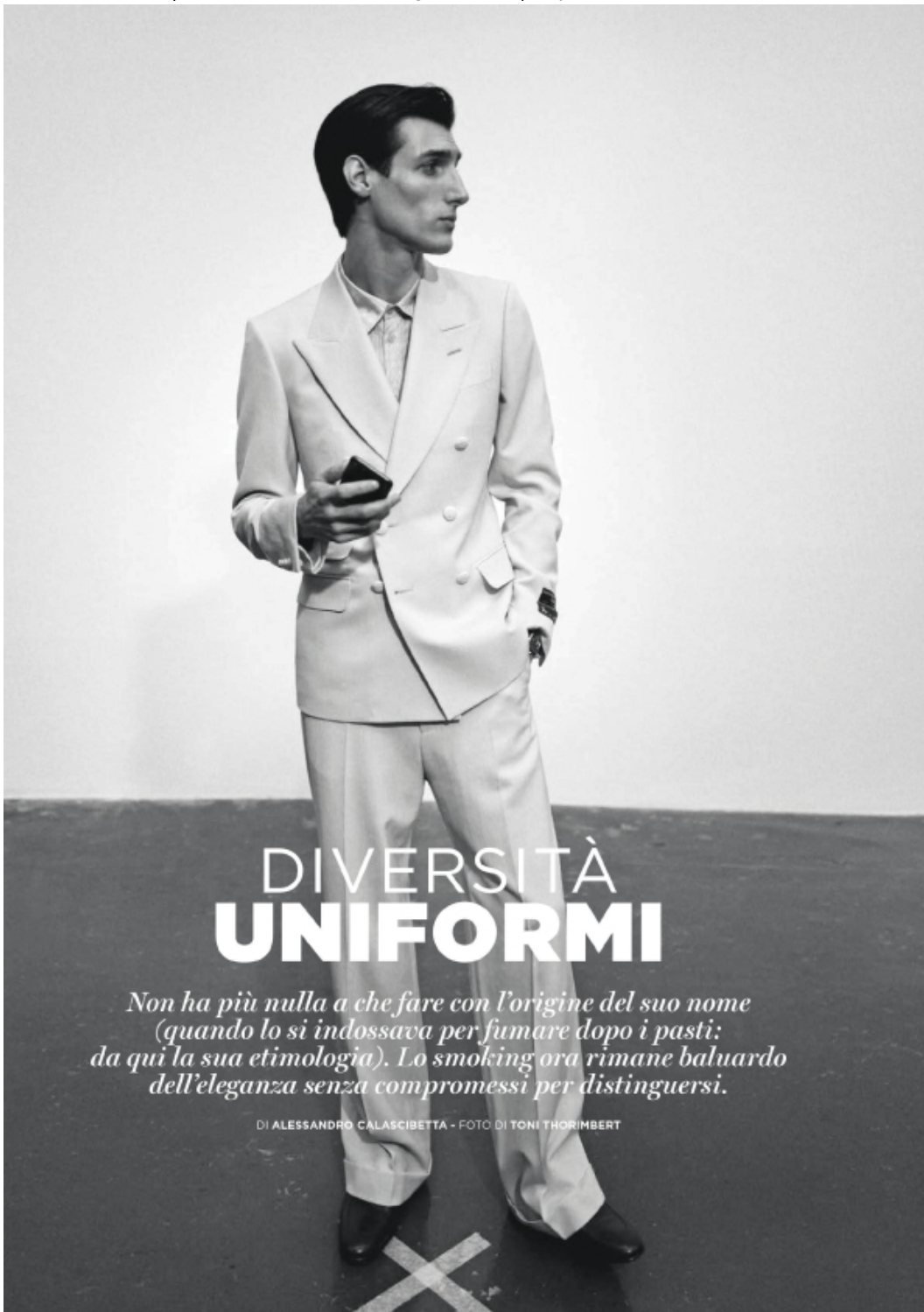




A sinistra, cappotto **TOD'S**, camicia e maglia **GRIFONI**, pantalone **PAUL SMITH**, occhiali **MOSCOT**, scarpe **GREEN GEORGE**

A destra, cappotto **PAOLONI**, completo **CANAKU**, maglia collo alto **MATÉMA**, scarpe **GIANVITO ROSSI**





DIVERSITÀ UNIFORMI

*Non ha più nulla a che fare con l'origine del suo nome
(quando lo si indossava per fumare dopo i pasti:
da qui la sua etimologia). Lo smoking ora rimane baluardo
dell'eleganza senza compromessi per distinguersi.*

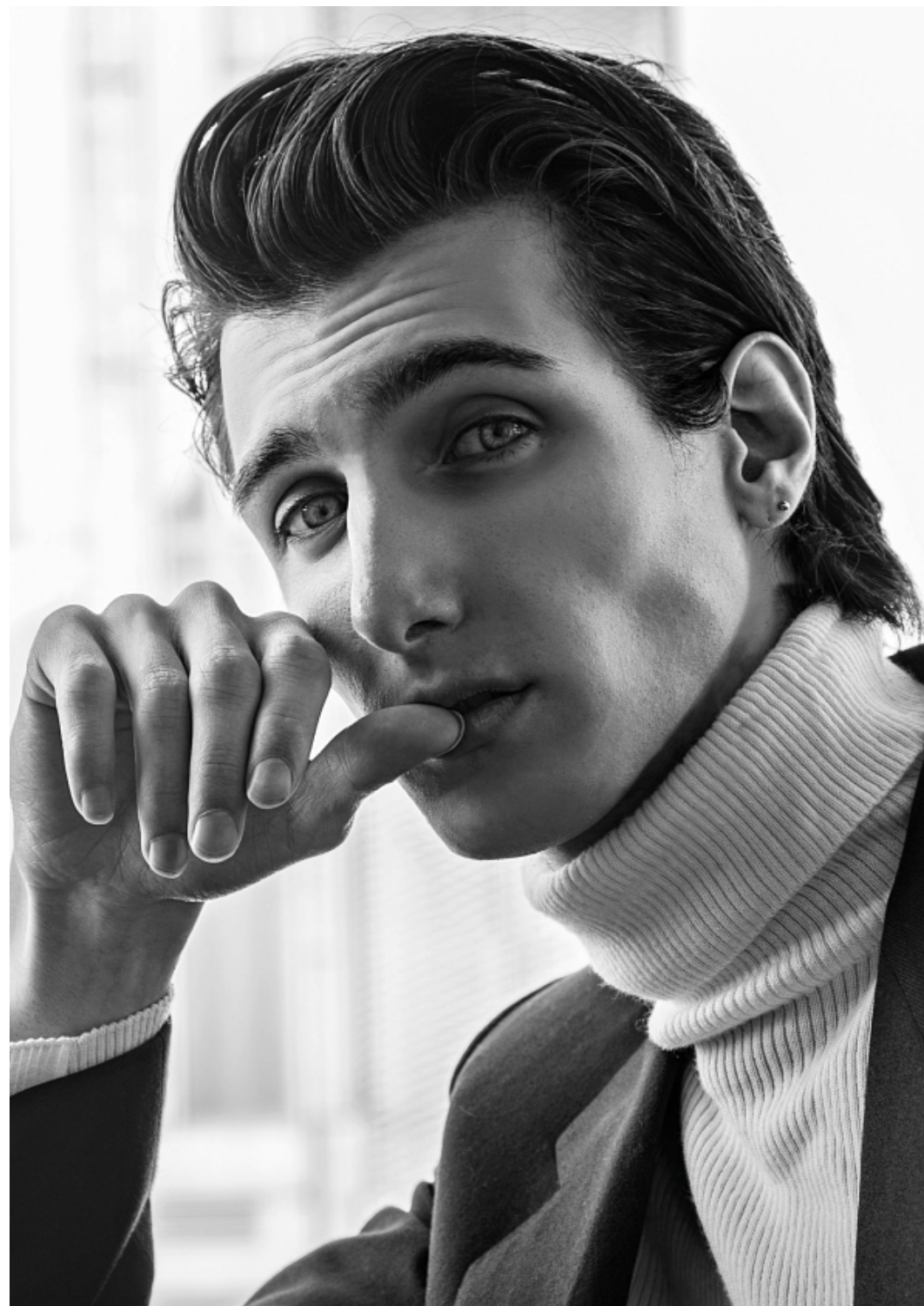
DI ALESSANDRO CALASCIBETTA - FOTO DI TONI THORIMBERT

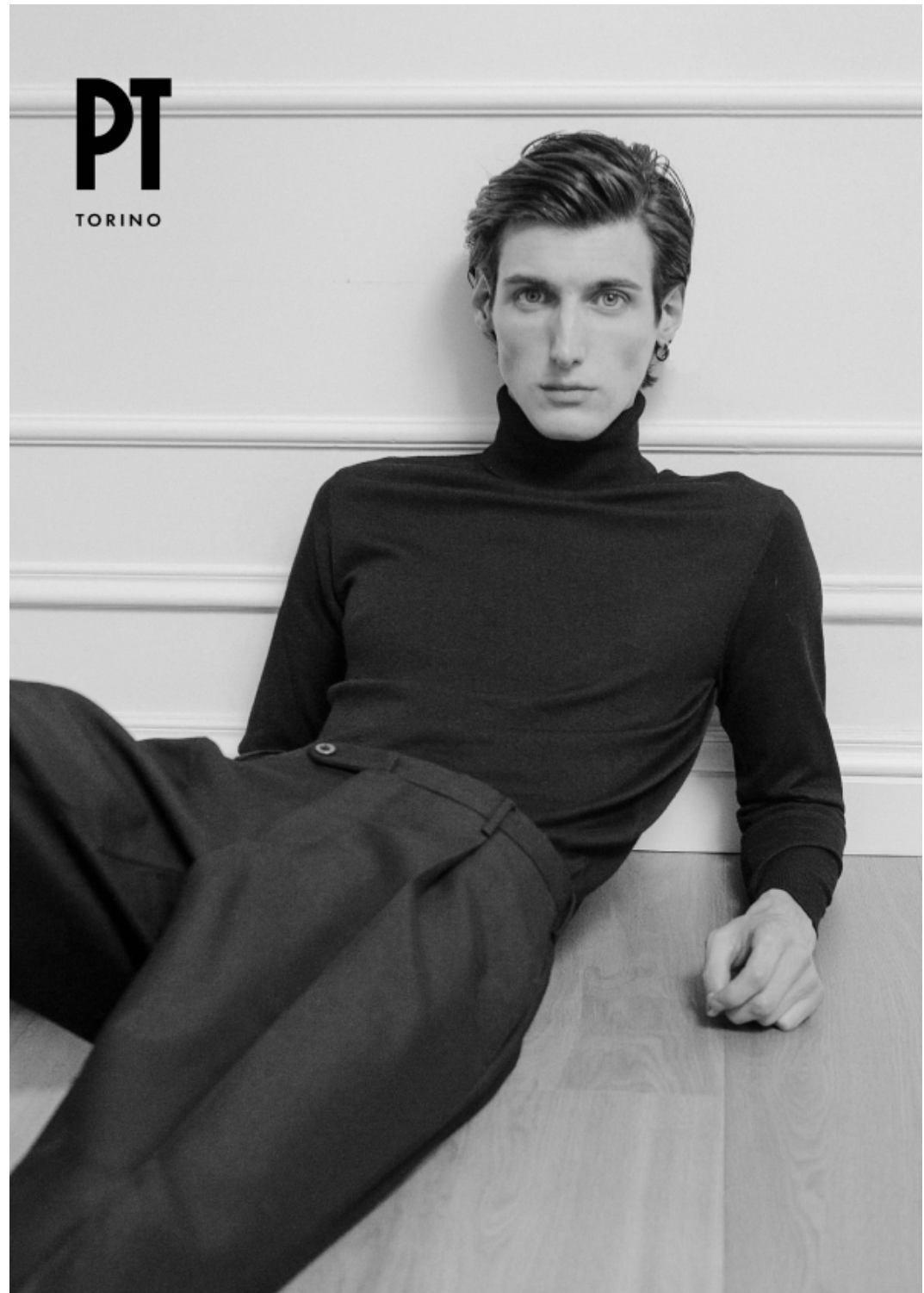


MAURO
OTTAVIANI
MADE IN ITALY




**LUDOVICA
MASCHERONI**
COUTURE











SCAN ME 