



ALTEZZA 1,87
TAGLIA M/L
PETTO 85
VITA 71
FIANCHI 91
PANT. INT. 64
COLLO 38
SCARPE 44
OCCHI BLU
CAPELLI CASTANI
HEIGHT 6,2
SIZE M/L
CHEST 33 1/2
WAIST 28
HIP 36
INSEAM 33
COLLAR 15
SHOES 10
EYES BLUE
HAIR BROWN

.FASHION

FASHION MODEL MANAGEMENT VIA G. SILVA 40 20149 MILANO T. +39 02 480861 WWW.FASHIONMODEL.IT

Marcel C.

altezza: **187**

petto: **85**

vita: **71**

fianchi: **91**

scarpe: **44**

occhi: **blu**

capelli: **castano**

height: **6,1 1/2**

chest: **33 1/2**

waist: **28**

hips: **36**

shoes: **10**

eyes: **blue**

hair: **brown**



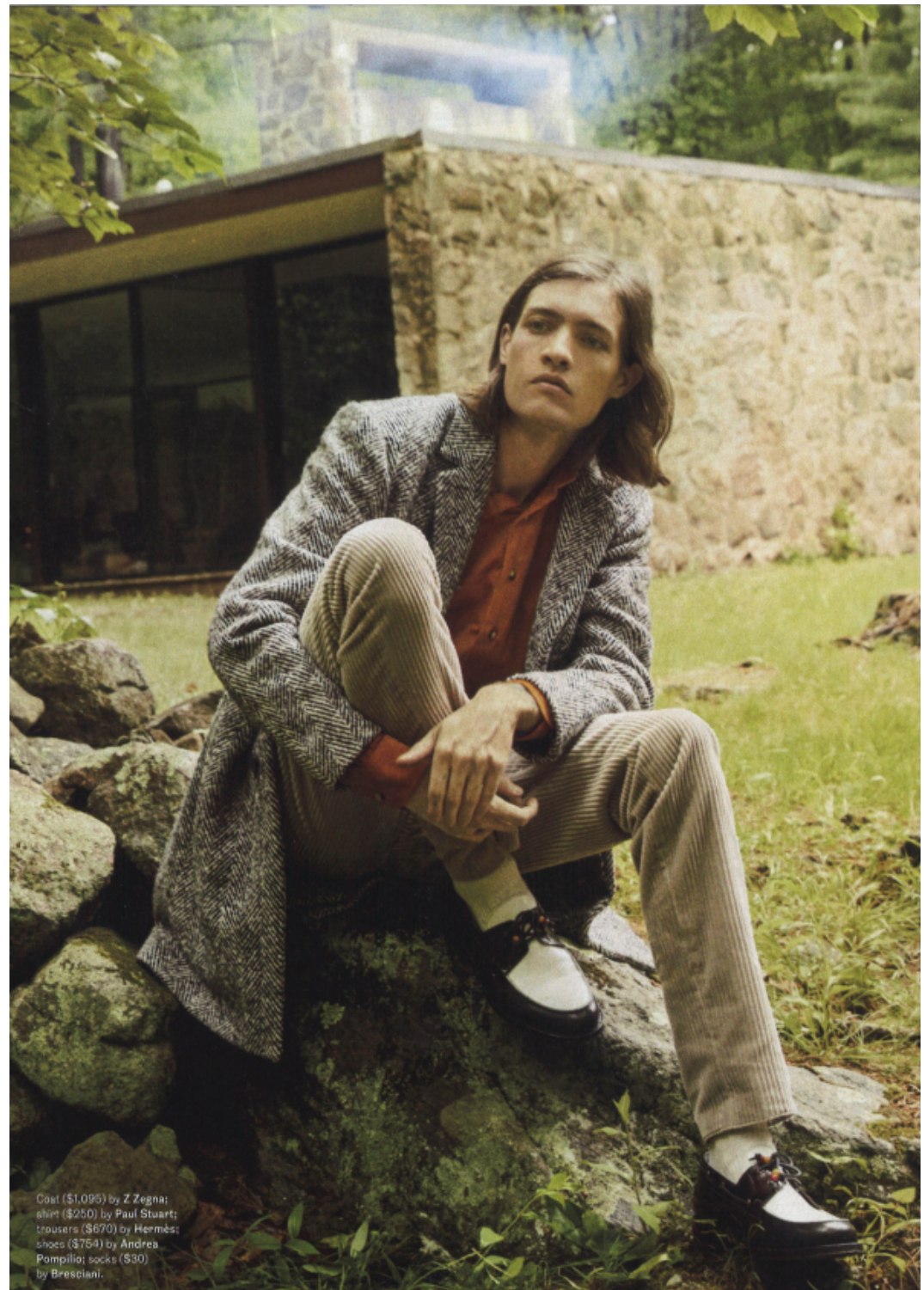
BOOK



This page: Suit (\$4,435) by Brunello Cucinelli; sweater (\$1,150) by Salvatore Ferragamo; loafers (\$890) by Tom Ford. Opposite: Jacket (\$750), shirt (\$450), and trousers (\$350) by Tomas Maier; sneakers (\$85) by Gola; glasses (\$295) by Dom Vetrol.









THIS PAGE, FROM LEFT: Suit by Canali, sweater by Brooks Brothers, sneakers by Spalwart. Suit and shirt by Ermenegildo Zegna, sweater by Gucci, sneakers by Maison Margiela, watch by Patek Philippe. OPPOSITE: Suit by Versace. Turtleneck by Wallace & Barnes.







