



ALTEZZA 1,88  
TAGLIA S/M  
PETTO 101  
VITA 80  
FIANCHI 97  
PANT. INT. 87  
COLLO 41  
MANICHELLI 4  
OCCHI NOCCIOLA  
CAPELLI CASTANI  
HEIGHT 6'2  
SIZE M/L  
CHEST 40  
WAIST 31  
HIPS 39  
INSEAM 32  
COLLAR 16,5  
SHOES 10  
EYES HAZEL  
HAIR BROWN

**.F**  
FASHION

FASHION MODEL MANAGEMENT VIA G. SILVA 40 20149 MILANO T. +39 02 480861 WWW.FASHIONMODEL.IT

# Felipe Hulse

altezza: **188**

petto: **101**

vita: **79**

fianchi: **97**

scarpe: **44**

occhi: **nocciola**

capelli: **castano**

height: **6,2**

chest: **40**

waist: **31**

hips:

shoes: **10**

eyes: **hazel**

hair: **brown**



**BOOK**



**CI-CONTRE.**

— ELLE: *Robe en soie, EMANUEL UNGARO. Créoles en or et cre, AURÉLIE BIDERMANN. Pochette en python, WALTER ST multibrés en python, CHRISTIAN LOUBOUTIN.*

— LUI: *Costume, Chemise et cravate mise en ceinture, les Chaussures en cuir, SAN MARINA.*

**PAGE DE DROITE.**

— LUI: *Costume et chemise, le tout CERRUTI.*

— ELLE: *Veste manches courtes en coton gaufré, CHRISTIAN JON en coton, ALENAK MADULLINA. Sac en cuir verni, CHI or et breloques en nacre, AURÉLIE BIDERMANN.*



**CI-CONTRE.**

— HOMME EN NOIR: *Costume, chemise et cravate mise en ceinture, AGNÈS B.*

— ELLE: *Manteau à volants et robe en coton, le tout MOSCHINO. Pochette en satin, CHRISTIAN LOUBOUTIN.*

— LUI: *Costume, chemise et cravate mise en ceinture, CERRUTI.*





STARRING  
JESSICA ALBA

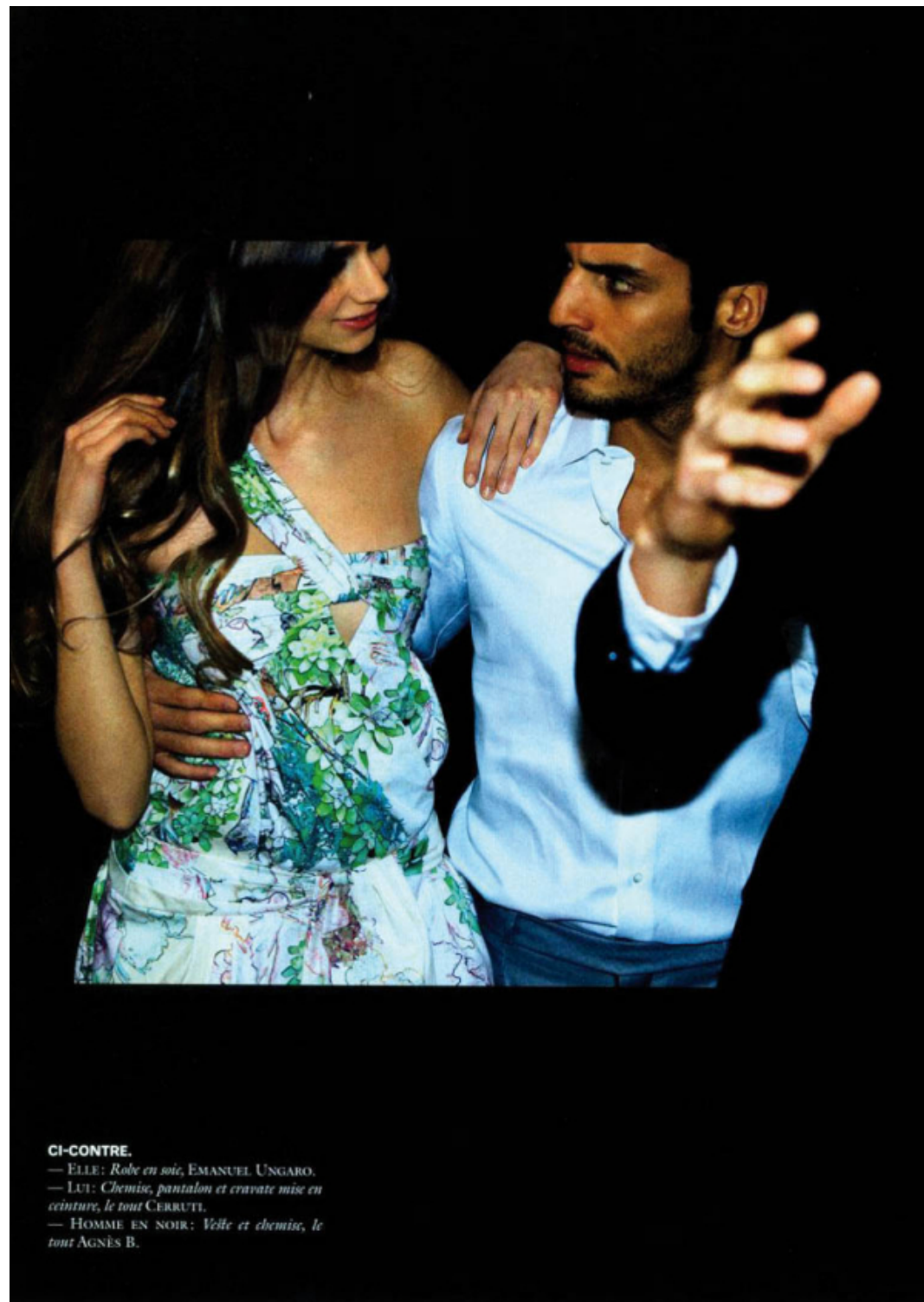
CAMPARI NARANJA  
50 Campari  
200 Juice de Naranja  
100g

CAMPARI VODKA TÓNICA  
50 Campari  
50 Vodka  
200 Tónica  
100g

CAMPARI  
red passion

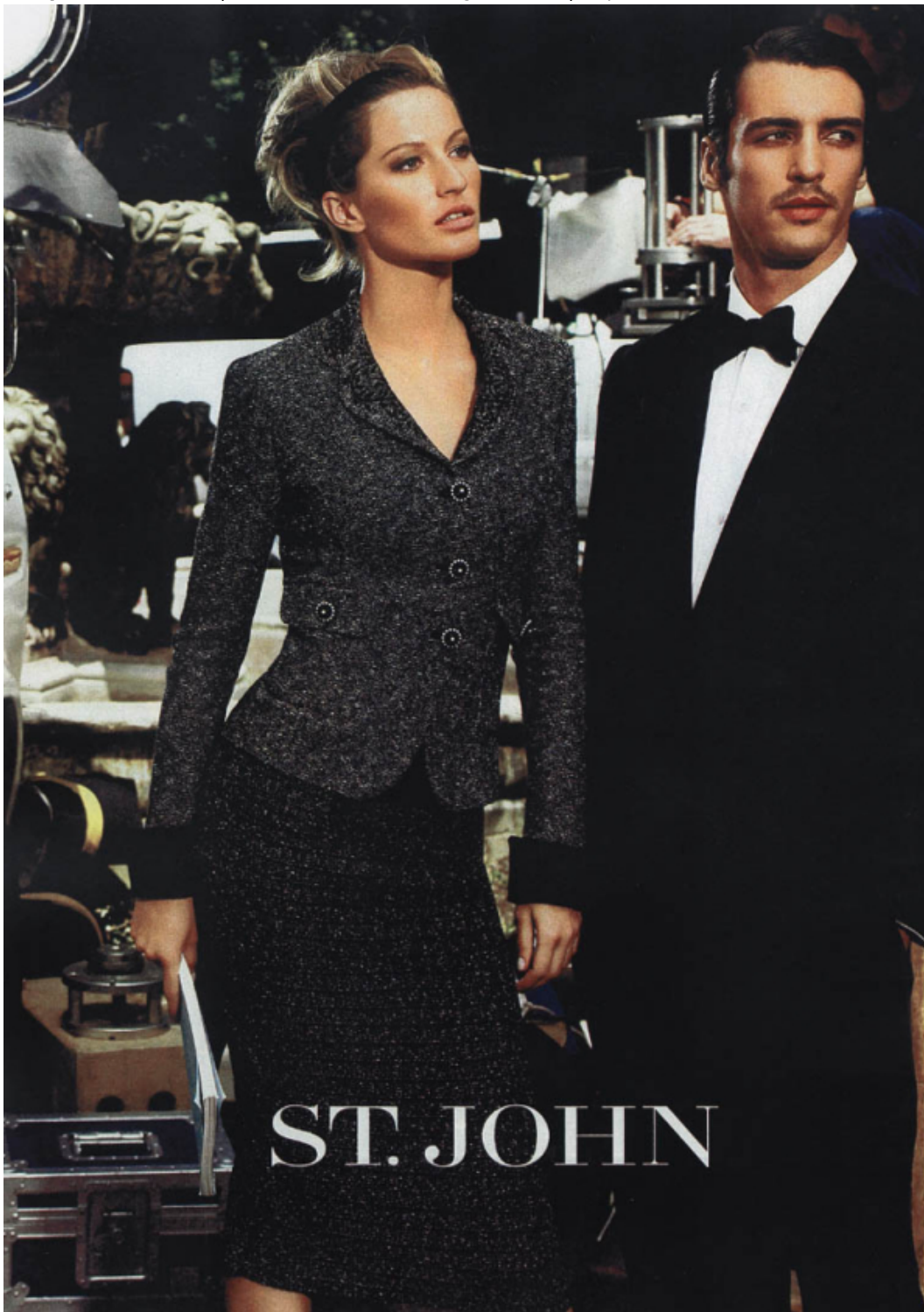
DISFRUTA DE UN CONSUMO RESPONSABLE. 25°

WWW.CAMPARI.COM



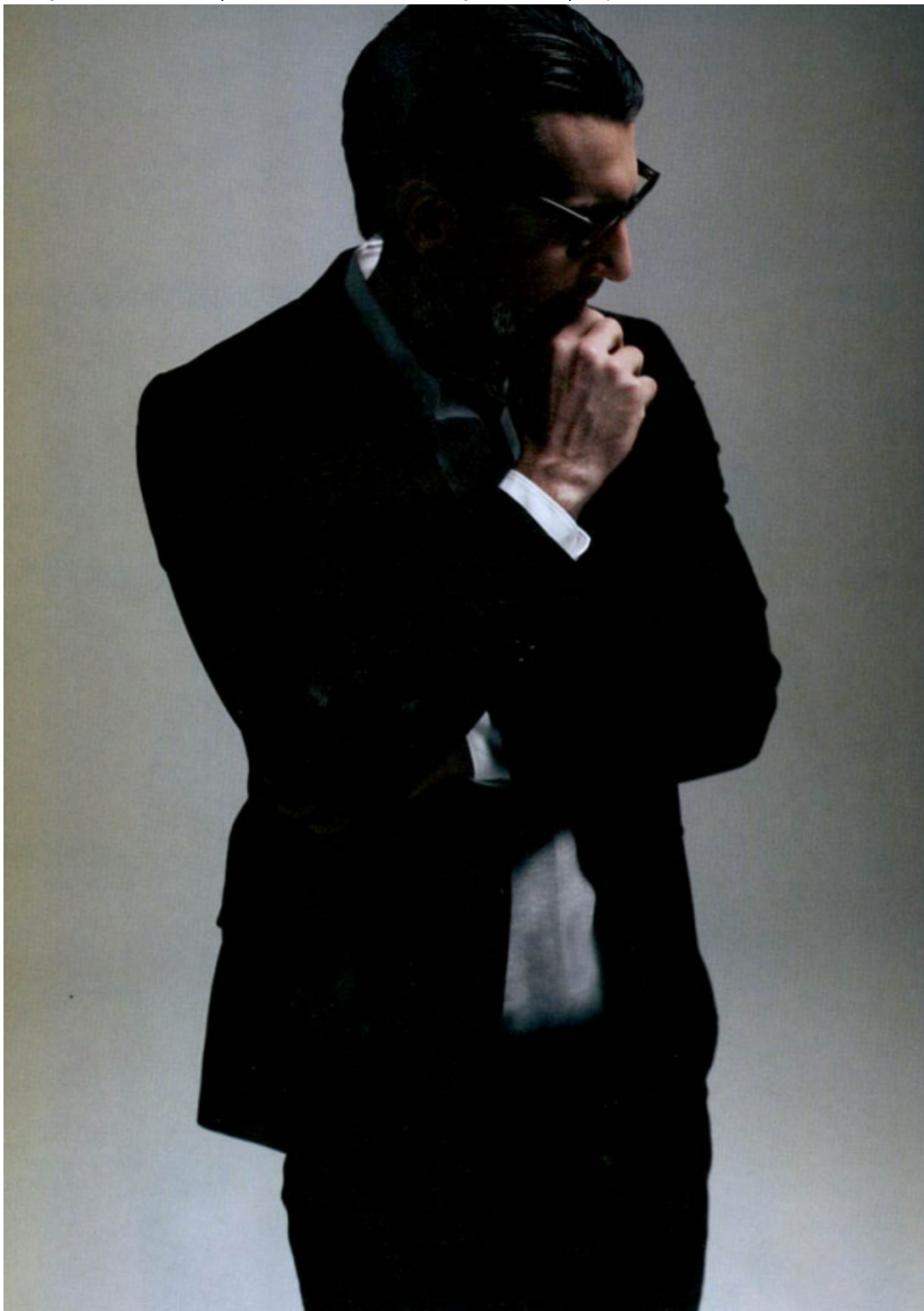
**CI-CONTRE.**  
— ELLE: *Robe en soie*, EMANUEL UNGARO.  
— LUI: *Chemise, pantalon et cravate mise en ceinture, le tout CERRUTI.*  
— HOMME EN NOIR: *Veste et chemise, le tout AGNÈS B.*





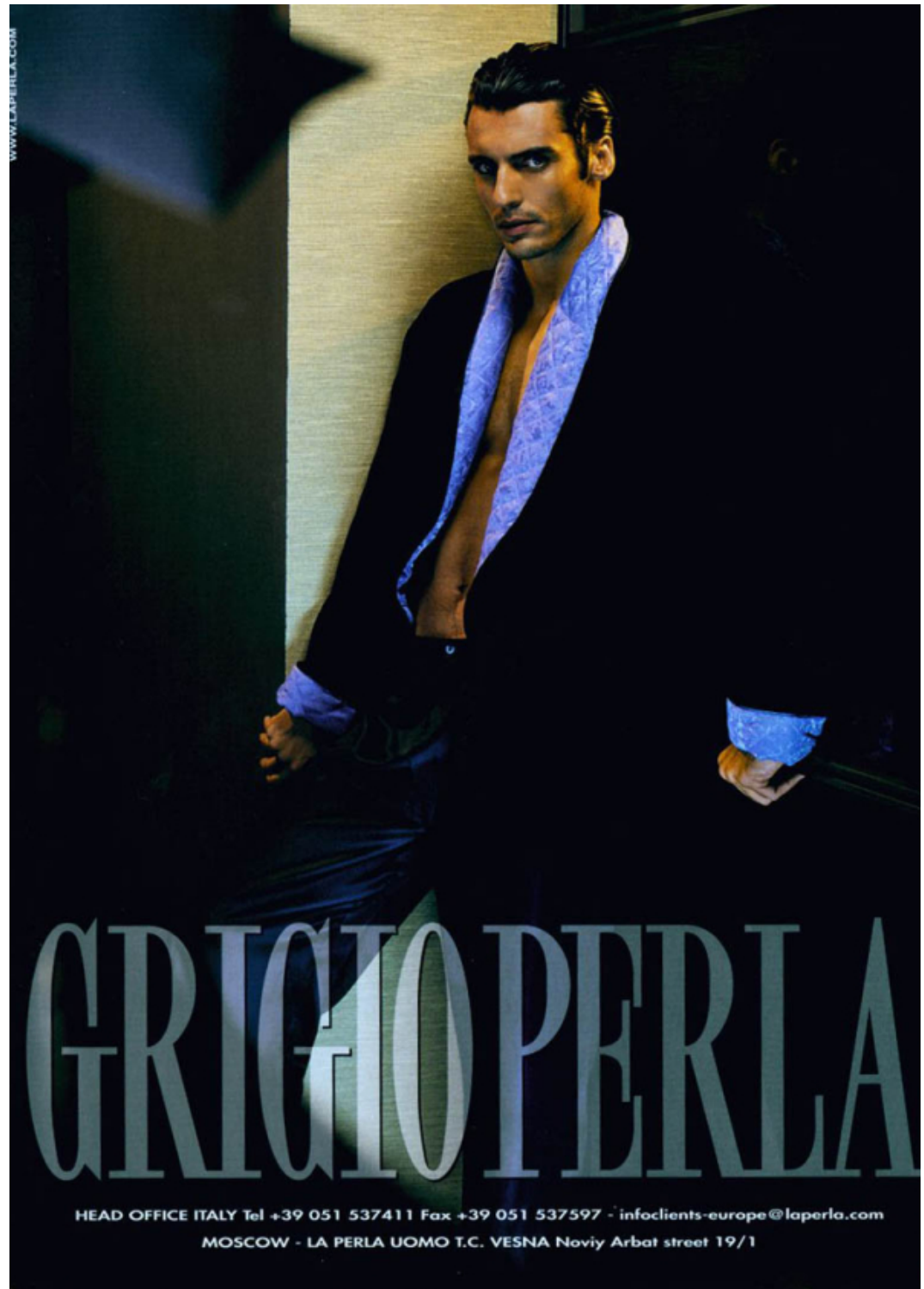






MESSAGERIE

[www.messengerie.it](http://www.messengerie.it)





RDF \*\*\*\*\*  
Beiersdorf ©2004

THE DIFFERENCE BETWEEN GOING OUT



**AND STAYING IN.**

The difference is new NIVEA® Smooth Sensation. Its breakthrough formula combines the intense moisturizers of NIVEA's richest creams with a sensationally light, delicate lotion. To leave your skin smooth and instantly ready to touch and be touched. Visit [www.NIVEAusa.com/smoothsensation](http://www.NIVEAusa.com/smoothsensation)

**NIVEA. TOUCH AND BE TOUCHED.**



**NIVEA**  
body

**Smooth Sensation**  
Daily Lotion for Dry Skin

Triple Action

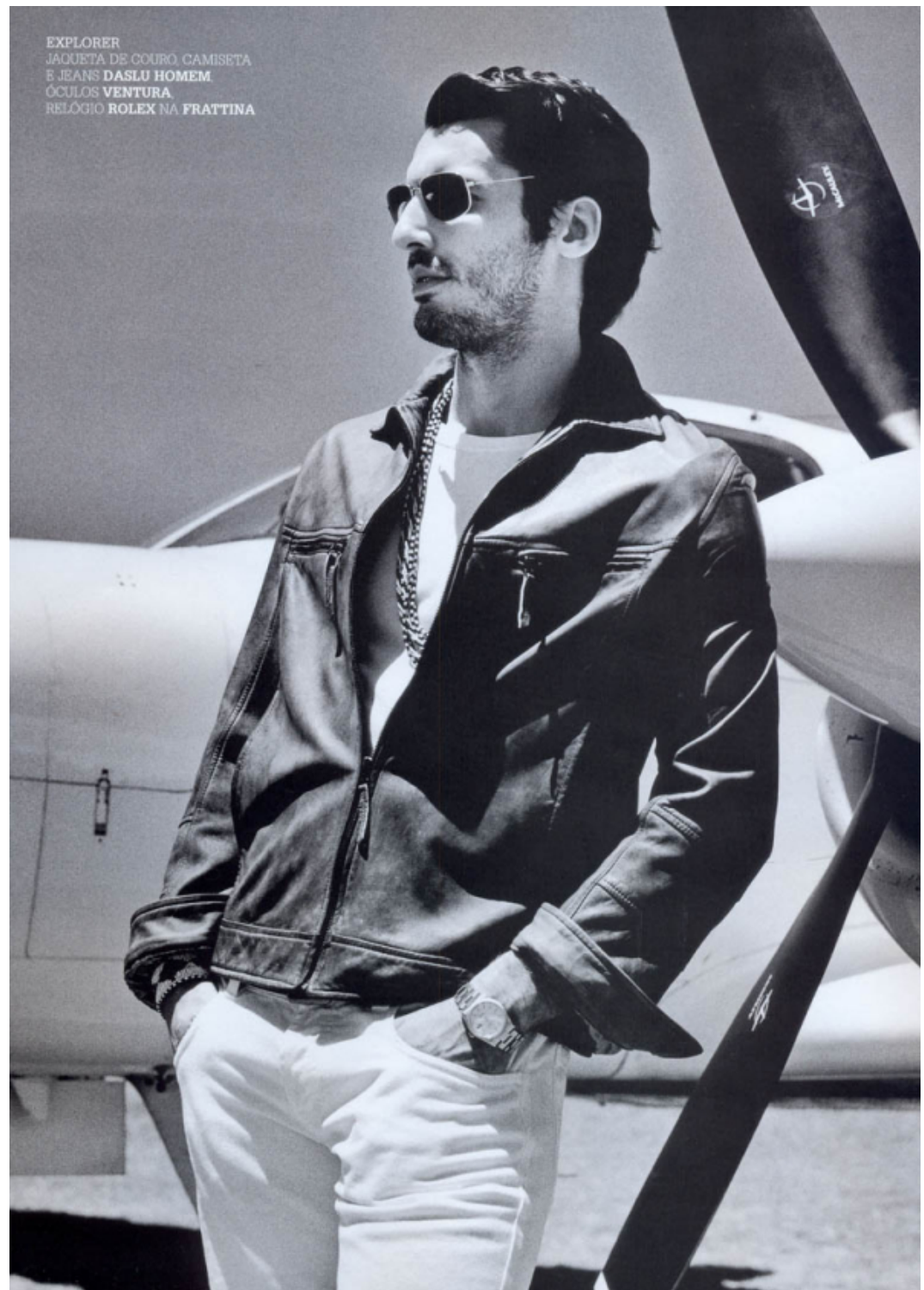
- Nourishes
- Revitalizes
- Absorbs quickly

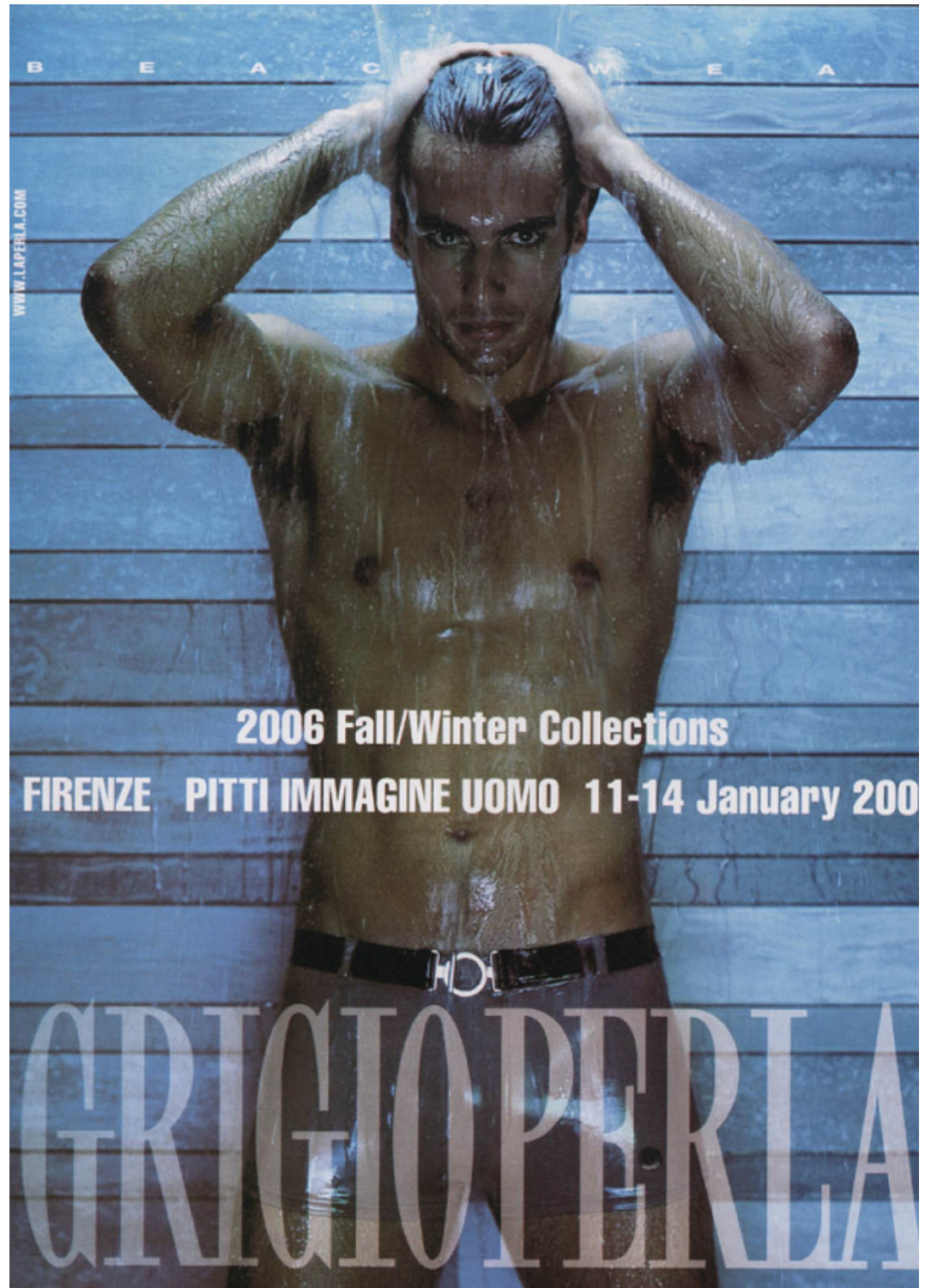
**RANGER**  
CAMISA, BERMUDA CARGO E  
CINTO DE COURO **DASLU** HOMEM,  
ÓCULOS **VENTURA**,  
RELÓGIO **ROLEX** NA **FRATTINA**

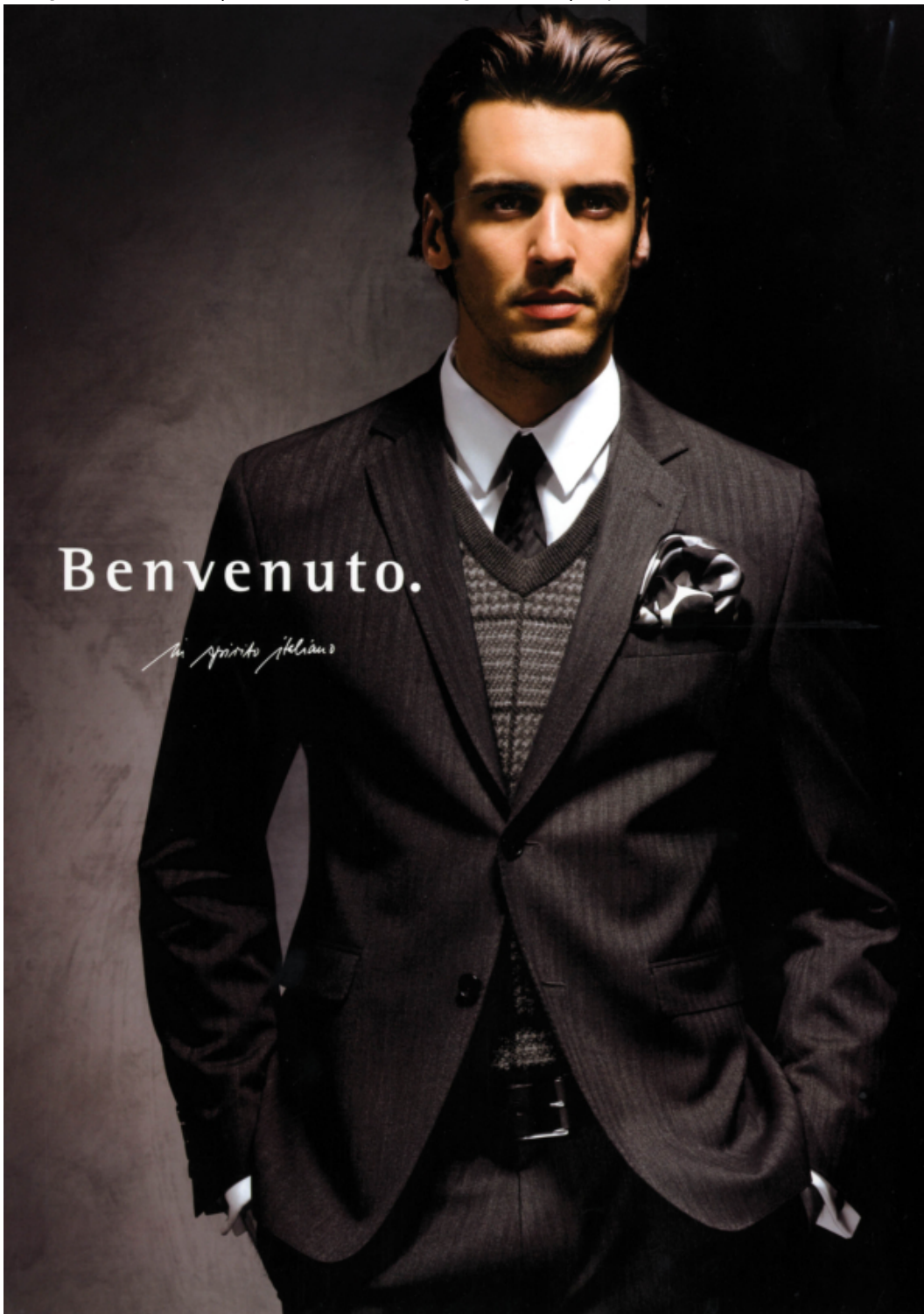
NA PÁGINA AO LADO  
**ROOTS**  
TOP DE SEDA E PULSEIRAS  
DE OSSO **DASLU**,  
PULSEIRAS DE MIÇANGA  
**OUT OF AFRICA**,  
BRINCO **IZABEL ESTEVES**



**EXPLORER**  
JACUETA DE COURO, CAMISETA  
E JEANS **DASLU** HOMEM,  
ÓCULOS **VENTURA**,  
RELÓGIO **ROLEX** NA **FRATTINA**









SCAN ME 